



Position Statement - Immunoglobulin Replacement Therapy (IRT) for Primary Immunodeficiency (PID)

This document has been developed by [ASCIA](http://ascia.org.au), the peak professional body of clinical immunology/allergy specialists in Australia and New Zealand. ASCIA information is based on published literature and expert review, is not influenced by commercial organisations and is not intended to replace medical advice. For patient or carer support contact [AusPIPS](http://auspipe.org.au), [HAE Australasia](http://hae.org.au), [IDFA](http://idfa.org.au), or [IDFNZ](http://idfnz.org.nz).

The aim of this document is to improve health outcomes for people with primary immunodeficiencies (PIDs), also known as inborn errors of immunity, by:

- Assisting GPs, paediatricians, and other medical specialists to recognise the early signs of PIDs and refer patients to a clinical immunologist to confirm diagnosis and initiate treatment, including immunoglobulin replacement therapy (IRT) if required.
- Increasing awareness of IRT options for patients with PIDs, which is given as intravenous immunoglobulin (IVIg) or subcutaneous immunoglobulin (SCIg), and the pros and cons of IVIg versus SCIg.

Contents	Page
Overview of PIDs	2
Early recognition and referral of patients with PIDs	3
Warning signs of PIDs	4
IRT for PID	5
IVIg or SCIg	6
Resources	10

This document is based on expert opinion, consensus and publications and reviewed by the ASCIA IRT/PID Working Party. Members are listed at www.allergy.org.au/members/committees#wpai

This document is a source for ASCIA IRT e-training for health professionals which is available at <https://immunodeficiency.ascia.org.au> This e-training course was developed as part of the National Prescribing Service (NPS) MedicineWise ViP Immunoglobulin project.

Key points

- PIDs are a diverse group of more than 400 potentially serious, chronic illnesses due to inherited absence or dysregulation of parts of the immune system.
- Due to their rarity, delay in the diagnosis of PID is common, increasing the risk of further complications and reduced survival rates. As well as the recognition of warning signs, improved access to specialist clinical and diagnostic laboratory services is required to improve the early diagnosis and treatment of PID.
- Early and correct diagnosis of PID leads to appropriate treatment, including IRT, which improves quality and length of life. The aim of this treatment is to replace immunoglobulin to maintain normal Immunoglobulin G (IgG) levels, with the dose used individualised for each patient.
- IRT is the standard of care for patients with antibody deficiency due to PID disease. It should be readily available to these patients while under the active care of a clinical immunology/allergy specialist with support from specialist medical, nursing and allied health professionals.

- IRT can be given as IVIg or SCIg and pharmacokinetics differ according to administration route. The choice of route (IVIg or SCIg) is dependent on multiple factors, including patient preference, medical conditions and lifestyle. The preferred route may vary at different times during a patient's life.

Overview of Primary Immunodeficiencies (PIDs)

Primary immunodeficiencies (PIDs), also known as inborn errors of immunity, are a diverse group of more than 400 potentially serious, chronic illnesses due to inherited absence or dysregulation of parts of the immune system. Symptoms often appear in childhood, but many can first occur in adult life.

PIDs can lead to reduced quality of life and life expectancy due to recurrent, chronic or severe infections, swellings, autoimmune and inflammatory problems, and are a significant health burden.

PIDs are different from acquired immunodeficiencies (also known as secondary immunodeficiencies), which may be due to malignancy, cancer treatments, immunosuppressive medications, autoimmune diseases, or infections such as the human immunodeficiency virus (HIV), which causes acquired immunodeficiency syndrome (AIDS).

Individual PIDs are rare, with only a few patients identified in the world, whilst the more common PIDs affect between 1 in 10,000 and 1 in 1,000,000 people.

There are **six main types of primary immunodeficiencies** that affect the immune system in different ways:

1. **Predominantly antibody deficiencies such as common variable immunodeficiency (CVID).**
2. **Combined immunodeficiencies such as severe combined immunodeficiency (SCID).**
3. **Phagocytic cell deficiencies such as chronic granulomatous disease (CGD).**
4. **Immune dysregulation such as autoimmune lymphoproliferative syndrome (ALPS).**
5. **Autoinflammatory disorders such as familial Mediterranean fever (FMF).**
6. **Complement deficiencies such as hereditary angioedema (HAE).**

Note: A published classification of PIDs has been developed by the International Union of Immunological Societies (IUIS), which is regularly modified. The current version divides PIDs into nine categories and refers to PIDs as Inborn Errors of Immunity. For the purpose of this document, the more readily recognised term of primary immunodeficiencies (PIDs) is used.

Research and advances in therapies have resulted in improved health and a longer life for people with PIDs. There are currently six main types of treatment options depending on the type of PID:

1. **Antibiotics**
2. **IRT - SCIg or IVIg**
3. **Immunomodulation including biologics**
4. **HAE treatments**
5. **Haematopoietic stem cell transplantation (HSCT)**
6. **Gene therapy**

The focus of this document is IRT (SCIg or IVIg) for patients with PID.

For further information about the types of PIDs and treatments refer to Appendices A and B in the [ASCIA Immunodeficiency Strategy for Australia and New Zealand](#)

Early recognition and referral of patients with PID

Due to their rarity, delay in diagnosis of PIDs is common, increasing the risk of further complications and reduced survival rates:

- For infants and very young children with severe PIDs, diagnostic delay leads to severe complications due to infections and early death.
- Early diagnosis is vital for severe PIDs, to allow curative treatment such as urgent HSCT, also known as bone marrow transplant.
- For older children and adults with PIDs where curative treatment is not currently possible, delay in diagnosis can be associated with:
 - Infections, resulting in possible organ damage.
 - Increased morbidity.
 - Reduced life expectancy.

Early and correct diagnosis will lead to appropriate treatment, including IRT, which improves quality and length of life. This requires support from expert multi-disciplinary teams comprising of specialist medical, nursing and allied health professionals.

As well as the recognition of warning signs listed in this document, access to specialist clinical and diagnostic laboratory services is required to improve early diagnosis and treatment.

With targeted resources, patients with PID can be spared unnecessary interventions, and instead utilise available medical treatments to maximise their opportunities to lead productive and healthy lives.

The role of GPs, paediatricians and physicians in identifying and managing patients with PIDs

GPs, paediatricians and adult medicine physicians, particularly respiratory medicine physicians and gastroenterologists, have an important role in identifying and managing patients with PIDs including:

- Recognition of early symptoms and signs of PIDs.
- Appropriate investigation and interpretation of test results.
- Appropriate and timely referral to a clinical immunologist.
- Appropriate follow up care in conjunction with a clinical immunologist.
- Management of general health issues, particularly assessment of growth and development in children in patients with PIDs.

When should patients be referred to a clinical immunologist?

Patients with suspected PID should be referred to a [clinical immunologist](#) when:

- They have early warning signs of PID.
- Results of initial testing suggest PID.
- Results of initial testing are confusing, and diagnosis is unclear.
- Results do not confirm PID but there remains a high clinical suspicion for PID.

ASCIA INFORMATION FOR HEALTH PROFESSIONALS

Warning signs of PID

Early diagnosis of other PIDs is important since delayed treatment results in complications that can be chronic or life threatening.

Warning signs of PIDs are listed below. However, there is a broader range of symptoms and signs as some PID patients may not present with recurrent and severe infection but develop other features such as autoimmunity, autoinflammation or neoplasia. Clinical concern exists patients should be referred to a clinical immunologist for further assessment.

CHILDREN	ADULTS
Four or more ear infections within one year	Two or more ear infections (otitis media) within one year
Two or more serious sinus infections within one year	Two or more sinus infections in one year in the absence of allergies
Two or more pneumonias within one year	Recurrent pneumonia
Recurrent, deep skin or organ abscesses	Recurrent, deep skin or organ abscesses
Two or more deep seated infections such as sepsis, meningitis or cellulitis	Infection with normally harmless tuberculosis-like bacteria
Persistent thrush in the mouth, skin or elsewhere after age one	Persistent thrush or fungal infection on skin or elsewhere
Two or more months on antibiotics with little effect	Persistent or recurrent viral infections (warts, herpes, EBV)
Need for intravenous antibiotics to clear infections	Need for intravenous antibiotics to clear infections
Failure to gain weight, grow at a normal rate, or chronic diarrhea	
Family history of PID	Family history of PID

This table is adapted from the ten warning signs developed by the Jeffrey Modell Foundation www.info4pi.org

Immunoglobulin Replacement Therapy (IRT) for PID

In people who have primary antibody (immunoglobulin) deficiencies, immunoglobulin replacement therapy (IRT):

- Is the standard of care.
- Is used to maintain Immunoglobulin G (IgG) levels.
- Greatly improves health and quality of life.
- Is often required lifelong, to prevent organ damage due to recurrent infections, which can be lifesaving.

IRT should be given under the supervision of a medical specialist trained in the care of patients with primary antibody deficiencies.

Access to IRT is guided by clear prescribing criteria to ensure clinically appropriate and economical use of immunoglobulin products.

All immunoglobulin products approved for use in Australia and New Zealand:

- Are made from pooled plasma from many healthy human donors, which is screened for hepatitis B, hepatitis C and HIV.
- Are treated with additional viral inactivation steps such as heat treatment, enzyme treatment, detergent treatment and nanofiltration.
- Contain 97-98% IgG specific antibodies against a broad spectrum of bacterial and viral pathogens, with traces of IgM and IgA.
- Are plasma derived products and therefore a limited resource. Prescribing a dose that uses a part of a vial results in unnecessary wastage so prescribers must ensure that doses are rounded to the full vial size. Vial sizes vary between products, and this must be taken into account.
- Are available to patients meeting the prescribing criteria under the active care and follow up of a clinical immunology/allergy specialist.

Immunoglobulin replacement therapy (IRT) can be given as IVIg or SCIg and pharmacokinetics differ according to administration route.

Both IVIg and SCIg:

- Are effective at reducing infections and hospitalisations.
- Preserve organ function and reduce long term damage from recurrent infections.
- Are associated with significant benefits to patient quality of life.
- Improve the lifespan of patients with PID.
- Have advantages and disadvantages, and the preferred route may vary during a patient's life.

Multiple brands of IRT products are available through the National Blood Authority (NBA) and the New Zealand Blood Service (NZBS). Rates of administration may vary for different products.

IVIg or SCIg

Intravenous immunoglobulin (IVIg) replacement therapy:

- Is usually administered approximately monthly (three to four weekly) in hospital.
- Leads to a high peak of IgG after infusion.
- Levels decrease rapidly over a few days then slowly decrease over the next few weeks.
- Does not require patient training as it is usually hospital based.

Most side effects are mild and self-limiting and include headache, fever, chills, nausea, and fatigue. The frequency of side effects may be linked to the rate of infusion as more side effects are seen with faster infusion rates.

Serious adverse events are rare but include anaphylaxis, aseptic meningitis, renal impairment and thrombosis.

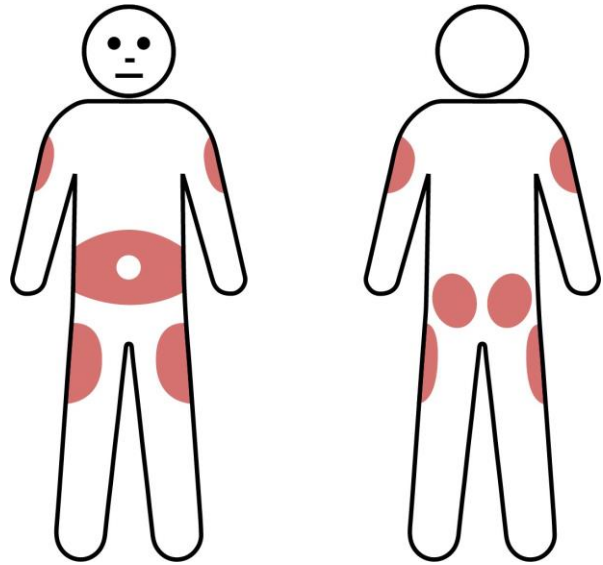
Advantages and disadvantages of IVIg therapy

	Advantages	Disadvantages
IVIg	<ul style="list-style-type: none"> • Less frequent infusion (3-4 weekly) • Rapid increase in serum IgG • Does not require training for patients and carers 	<ul style="list-style-type: none"> • Usually hospital based • IV access required • Risk of immediate and systemic adverse effects • Adverse effects from high IgG levels in 12-48 hours post infusion • Wear off symptoms prior to next infusion. Increasing dose or changing frequency may be required if patients are having significant issues with wear off symptoms

This table is an updated version of the original table that was adapted from APIIEG.

Subcutaneous immunoglobulin (SCIg) replacement therapy:

- Requires frequent administration (ranging from 1-3 times per week to once a fortnight) by patients or carers at home.
- Involves slow diffusion of IgG from subcutaneous tissue.
- Is associated with more consistent IgG levels due to frequent administration. Is administered at multiple injection sites according to personal preference, usually in the lower abdomen. However, the outer edge of the thigh or back of the upper arm can also be used, as shown in this image.



Systemic reactions to SCIg are much less common compared with IVIg.

Local injection site reactions such as redness, itching, swelling, or discomfort are common, but improve with time.

Advantages and disadvantages of SCIg therapy

	Advantages	Disadvantages
SCIg	<ul style="list-style-type: none"> • Home based therapy • IV access not needed • Few systemic side effects • Can be used for people with previous systemic reactions to IVIg or IV access difficulties -SCIg therapy may be the preferred treatment in these people. • Faster infusion duration • More consistent IgG levels with no wearing off effects related to IgG trough levels • Improved quality of life for patients and their families due to the flexibility, independence and empowerment associated with SCIg • Reduced hospital costs • Reduced people travel time and associated costs and inconveniences (e.g. time off school/ work, parking costs) • People can take treatment with them when travelling (e.g. on holiday) 	<ul style="list-style-type: none"> • Frequent administration (1-3 times per week or up to once a fortnight) • Local side effects (swelling, induration, local inflammation, itch), which are usually mild and transient • Some people may require battery or spring driven pumps, although some people may use the rapid push method which does not require a pump

This table is an updated version of the original table that was adapted from APIIEG.

Several factors affect the choice of IVIg or SCIg therapy

The decision to have immunoglobulin replacement therapy (IRT) administered as intravenous immunoglobulin (IVIg) or subcutaneous immunoglobulin (SCIg) depends on each patient's situation including medical history, response to treatment, compliance with therapy and lifestyle.

Factors that may affect the choice of route for IRT (IVIg or SCIg) include:

- **Patient preference and satisfaction** - This plays an important role in treatment decisions, particularly as some people with antibody deficiencies require lifelong IRT.
- **Availability** - There is a small number of conditions where SCIg has been approved for use under the national blood supply arrangements in Australia. Eligibility is dependant on the patient's specific condition.
- **Resourcing of SCIg products and consumables** - All consumables are provided at no cost to patients who are eligible for SCIg under the national blood arrangements. Some patients may prefer to use a pump. The arrangements for the provision of pumps are different in each state and territory and there may be a cost involved. Health professionals should familiarise themselves with local policies and procedures to be able to correctly inform their patients.
- **Other medical conditions** - SCIg therapy may be contraindicated in some patients with severe thrombocytopenia, bleeding disorders or for patients on anticoagulation therapy and may also be problematic for patients with widespread eczema.
- **Less frequent infusion procedures may be preferred for some young patients.**
- **The role of nurses - educating and supporting people on immunoglobulin replacement therapy (IRT)**

Nurses play a vital role in educating and supporting people who are being treated with immunoglobulin products. To assist with this process, ASCIA SCIg Nurse Competency and Patient Training Checklists are available at www.allergy.org.au/hp/papers/ascia-scig-competency-training-checklists

It is important that nurses have evidence-based information on:

- Access to and supply of immunoglobulin products.
- Administration of these products including storage and cold chain management.
- The role of immunoglobulins in treating a range of immunology, haematology and neurology conditions.
- Recognising and managing side effects or adverse reactions.

The role of medical specialists - prescribing immunoglobulin replacement therapy (IRT)

In addition to complying with approved uses of IRT, medical specialists assess:

- Which patients are eligible for IRT and are likely to benefit.
- Response to therapy.
- When to consider trial of therapy, if appropriate.

Prescribing immunoglobulin replacement therapy (IRT) by medical specialists in Australia

The approved uses for immunoglobulin products are set out in the Criteria for the Clinical Use of Immunoglobulin in Australia <https://www.criteria.blood.gov.au/CheckEligibility> which are funded through the National Blood Agreement.

To access immunoglobulin under the Agreement, a medical officer is required to submit an application through the National Blood Authority (NBA) national online system [BloodSTAR](#) (Blood System for Tracking Authorisations and Reviews).

LifeBlood, via BloodSTAR, manages the authorisation request and review process and ensures that access to Ig products is consistent with the Criteria. Immunoglobulin products are funded by the government and provided to eligible patients at no direct cost.

Some patients who are ineligible to access immunoglobulin products may be able to access them through a Jurisdictional Direct Order, at a cost to the approved health provider, or directly from suppliers, at a personal cost.

Prescribing immunoglobulin replacement therapy (IRT) by medical specialists in New Zealand

In New Zealand individual clinicians are required to seek authorisation from New Zealand Blood Service (NZBS) for the administration of immunoglobulin to individual patients.

Where treatment is managed under the care of a District Health Board (DHB) approval must also be gained from that DHB's local immunoglobulin authority (e.g. immunoglobulin committee).

For further information go to www.nzblood.co.nz/Clinical-information/Transfusion-medicine/Information-for-Health-Professionals/Request-forms

The role of pharmacists or blood bank – dispensing immunoglobulin replacement therapy (IRT)

Dispensers (blood banks or pharmacists) of immunoglobulin products support the safe use and quality management of these products in health services, by ensuring that the right immunoglobulin products are ordered and dispensed at the right time.

Transfer Care Plan for patients on immunoglobulin replacement therapy (IRT)

The ASCIA Transfer Care Plan for patients is available at www.allergy.org.au/hp/papers/ascia-transfer-care-plan-irt

This plan has been developed as a medical document to be completed by an immunology or nurse specialist, when a patient is transitioning from:

- Paediatric to adult medical care.
- One region to another.
- IVIg to SCIg.
- SCIg to IVIg.

ascia
www.allergy.org.au

TRANSFER CARE PLAN
for patients on Immunoglobulin
Replacement Therapy (IRT)

Patient name: _____ UR/MRN/NHI: _____
Date of birth: _____
Contact details (phone and email): _____
Plan prepared by (date): _____
Referring Nurse Specialist: _____
Referring Immunology Specialist: _____
Clinical indication: _____
Next of kin (name and contact number/s): _____
Relationship to patient: _____

CURRENT ■ IVIG OR ■ SCIG

IVIg or SCiG product name: _____
Dose: _____ Frequency: _____
Patient weight (date): _____ Trough IgG levels (date): _____
Current problems and comments: _____

SCIG DELIVERY METHOD: ■ RAPID PUSH OR ■ PUMP

Giving set/needle type: _____ Needle gauge: _____ Needle length (mm): _____
Number of sites per infusion: _____ Infusion site/s: _____
Pump brand (if applicable): _____
Date SCiG technique last assessed and comments: _____

ATTACHMENTS

IVig: Product/s used: _____
Side effects, reasons for change, comments: _____

SCiG: Product/s used: _____
Side effects, reasons for change, comments: _____

© 2024 ASCIA. ASCIA is the peak professional body of clinical immunology, allergy, paediatrics in Australia and New Zealand.
This plan has been developed as a medical document to be completed by an immunology or nurse specialist.

Resources

Further information:

BloodSafe eLearning <https://learn.bloodsafelearning.org.au/categories#immunoglobulin-courses>

National Blood Authority www.blood.gov.au/

ASCIA www.allergy.org.au/immunodeficiency

ASCIA - Patients and carers: www.allergy.org.au/patients/immunodeficiencies

ASCIA - Health professionals: www.allergy.org.au/hp/papers/immunodeficiency

ASCIA - Online training: <https://immunodeficiency.ascia.org.au>

Patient support:

Australian Primary Immunodeficiency Patient Support (AusPIPS Inc) www.auspiips.org.au

Immune Deficiencies Foundation Australia (IDFA) www.idfa.org.au

Immune Deficiencies Foundation New Zealand (IDFNZ) www.idfnz.org.nz

References: www.allergy.org.au/hp/papers#p4

© ASCIA 2024

Content updated 2024

For more information go to www.allergy.org.au/hp/papers/immunodeficiency

To support allergy and immunology research go to www.allergyimmunology.org.au/donate