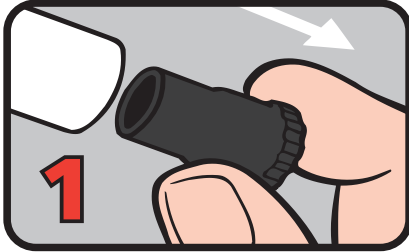
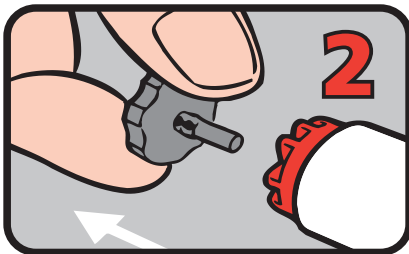


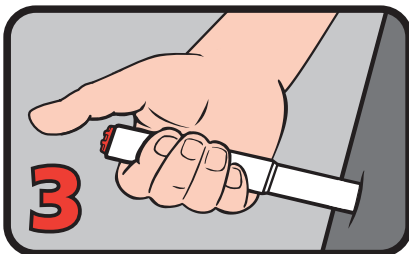
Anapen®



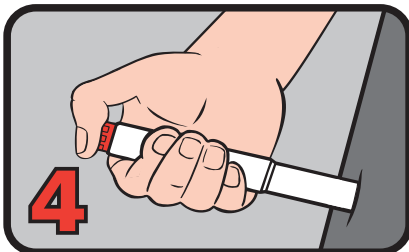
PULL OFF BLACK NEEDLE SHIELD



PULL OFF GREY SAFETY CAP from red button

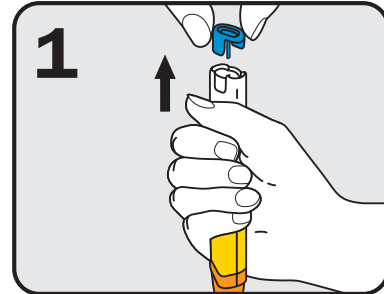


PLACE NEEDLE END FIRMLY against outer mid-thigh at 90° angle (with or without clothing)

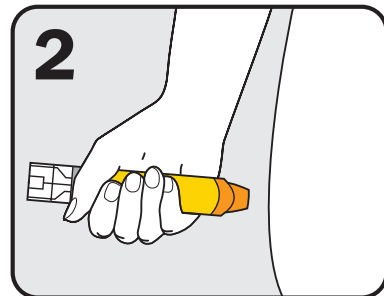


PRESS RED BUTTON so it clicks and hold for 10 seconds. REMOVE Anapen®

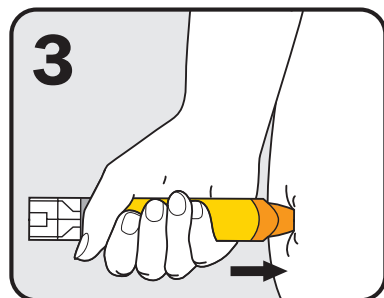
EpiPen®



Form fist around EpiPen® and PULL OFF BLUE SAFETY RELEASE



Hold leg still and PLACE ORANGE END against outer mid-thigh (with or without clothing)



PUSH DOWN HARD until a click is heard or felt and hold in place for 3 seconds REMOVE EpiPen®

Follow the ASCIA Action Plan or First Aid Plan for Anaphylaxis.

Provide ambulance with the used injector and the time it was given.