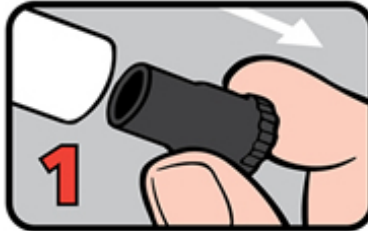
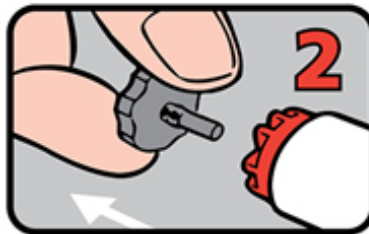


How to give Anapen[®]

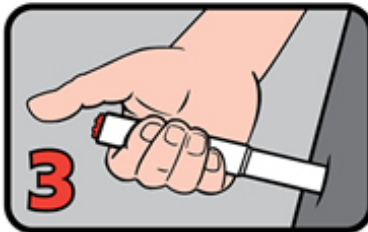
adrenaline (epinephrine) autoinjectors



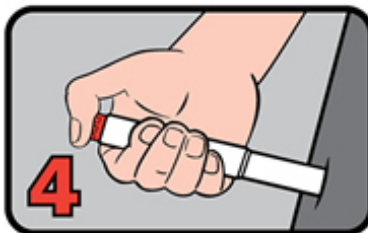
PULL OFF BLACK
NEEDLE SHIELD



PULL OFF GREY
SAFETY CAP
from red button



PLACE NEEDLE END
FIRMLY against outer
mid-thigh at 90° angle
(with or without clothing)



PRESS RED BUTTON
so it clicks and hold
for 10 seconds.
REMOVE Anapen[®]